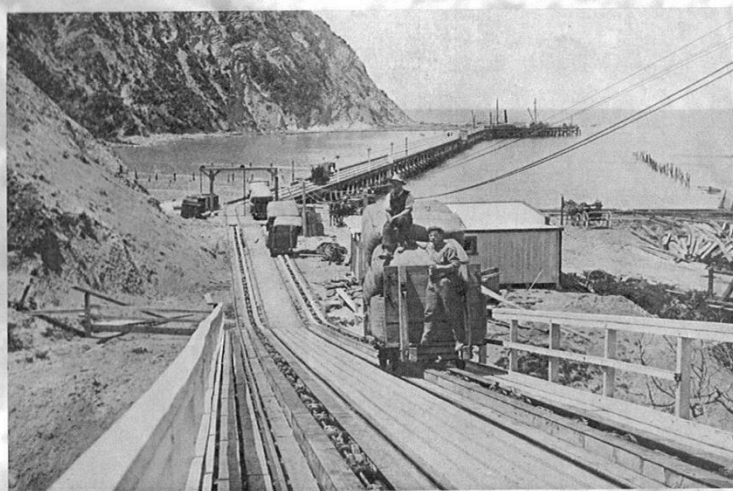


THE TOKOMARU BAY HERITAGE SITE

SAVING THE HERITAGE
RECORDING THE HISTORY





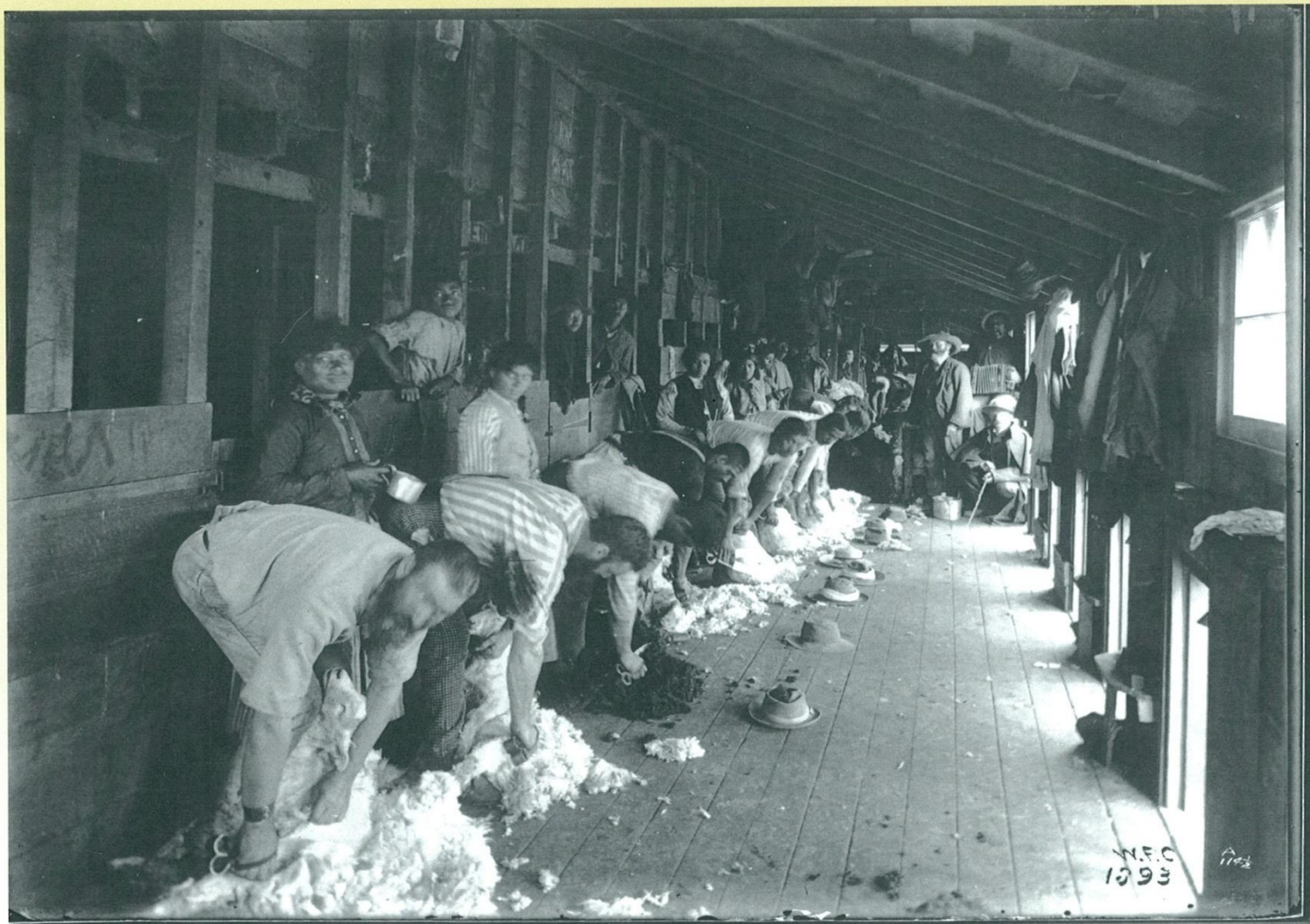
INTRODUCTION

This presentation provides a brief summary of what people can expect to see when the Tokomaru Bay Heritage Site Project is complete.

The Eastland Tourism Section is about to take off in exciting new directions that will establish this region as a destination to rival many of New Zealand's best.

The development of heritage sites at each of the Coastal communities is one such new direction.





BLADE SHEARING 1893

THE VISION

The restoration of the Tolaga Bay Wharf was the first of these projects. This refurbished structure, coupled with the adjacent Cooks Cove walkway is now a tourism destination of international class. The aim is to make the Tokomaru Bay Site Number 2 on the East Coast Heritage Trail.





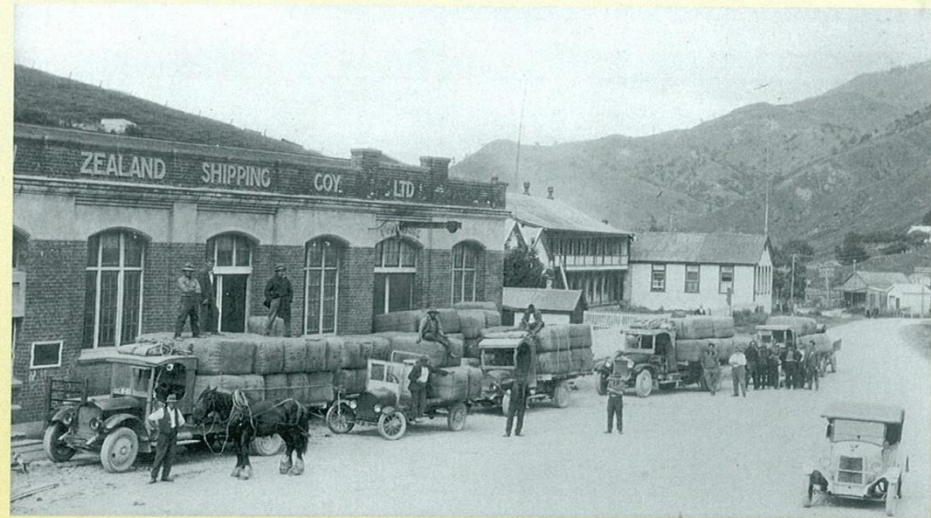
NZ SHIPPING COMPANY OFFICES

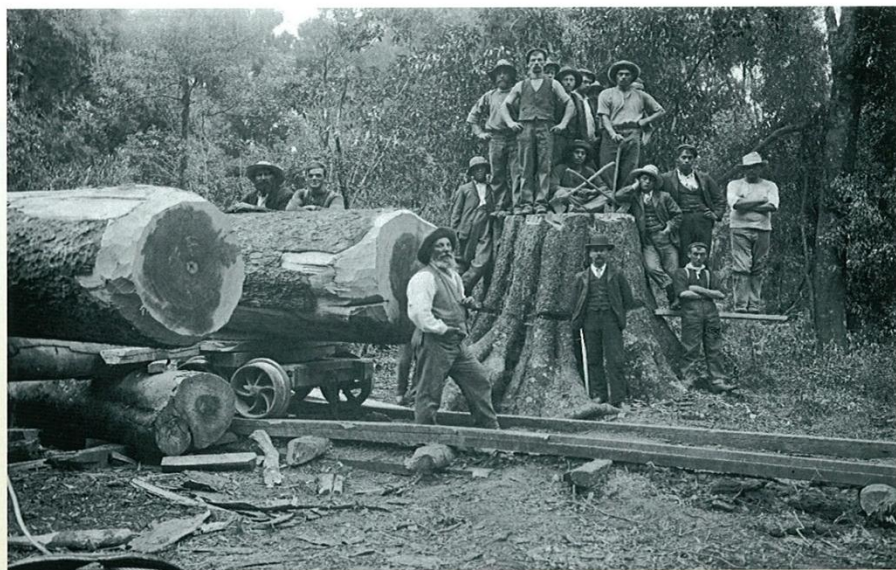
TOKOMARU BAY as a HERITAGE SITE

The planned structure at the site will be based on **3 Development Stages.**

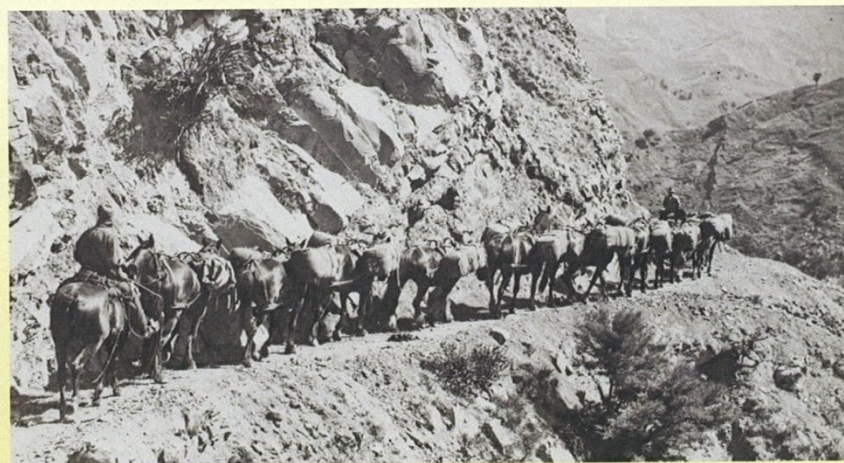
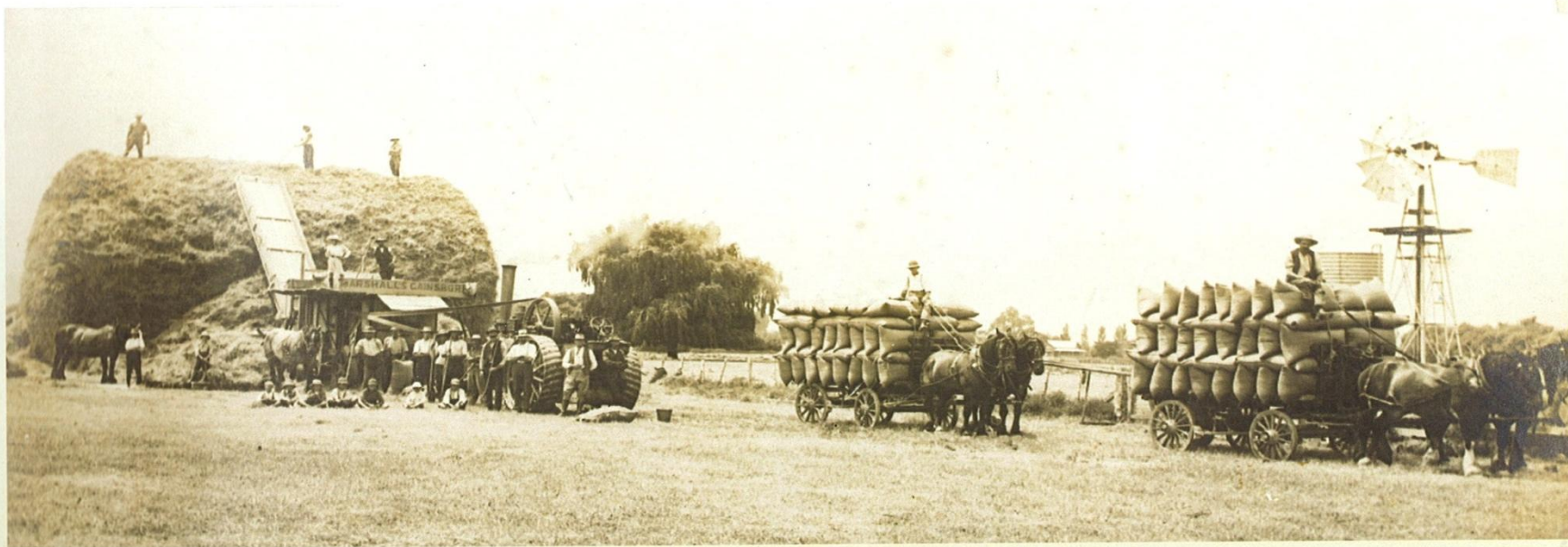
a) The Restoration of the NZ Shipping Company Offices and Wool Store Building.

This magnificent building will be restored to its former glory and provide an all weather permanent viewing gallery for the “History of the East Coast” - a record in written and photographic form of all aspects of our region’s history since human being’s first walked the landscape.





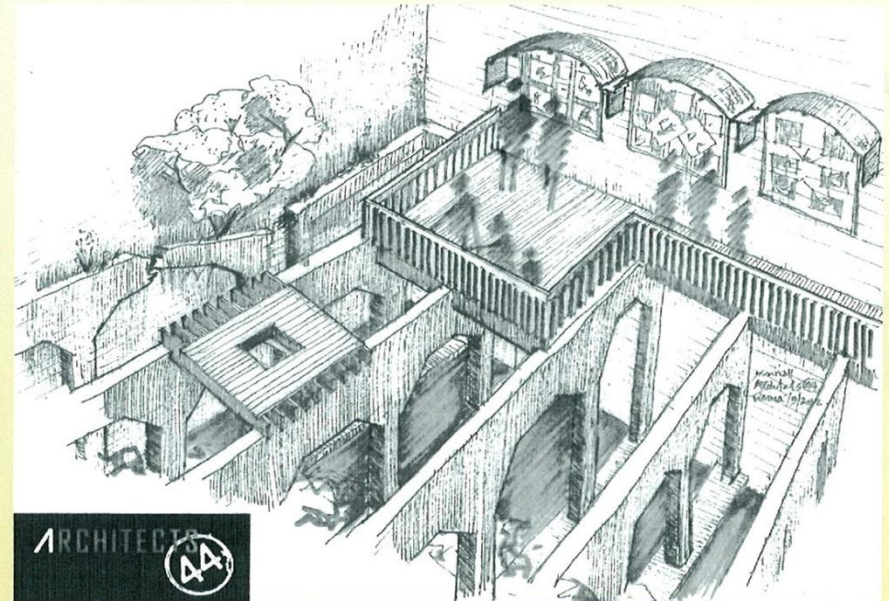




b) The Establishment of a Walking Track around the Freezing Works Ruins

This journey will engage tourists in a one hour walk around the site, stopping at key points to read about and absorb the atmosphere of the different parts of the works when it was in full operation.





FUNDING

The Tokomaru Bay Community recognises its responsibilities as a unified backer of this project. While it will have difficulty providing large amounts of the cash required to complete the works, it is committed to providing as much support as possible given the limitations of the community's economic base.



So far the community has:

- a) Come together over a number of hui to present a united front on this important development.
- b) Established a Heritage Trust which will engage a consultant to undertake a feasibility study of the project.

This investigation is estimated to cost **\$50,000** and will take approximately **6** months to complete.

